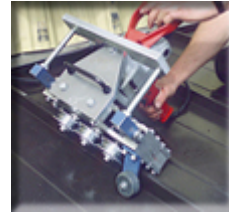
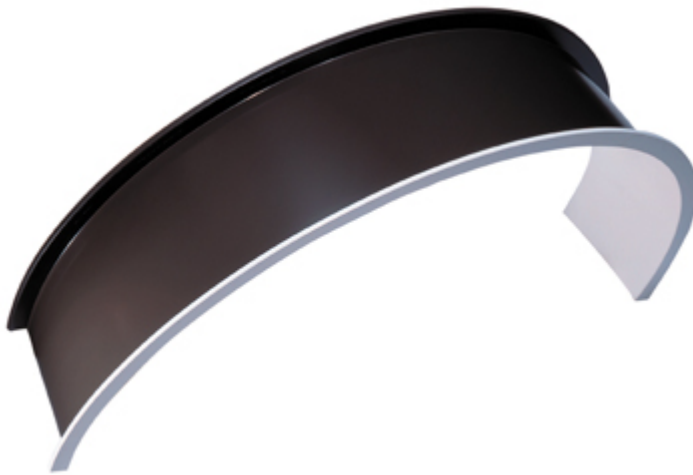


Ultra Seam US-150C Standing Seam Panel

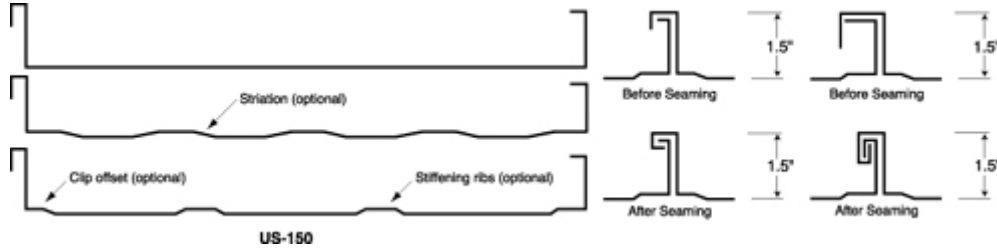
When aesthetic requirements call for a curved roof, the Ultra Seam US-150C Curved Panel is the system of choice. The **mechanically seamed** panels can be curved to a 19" inch radius.



Mechanical Seamer



UL 90 Rated
ASTM E-1592
ASTM E-1680
ASTM E-1646



ULTRA SEAM US-150 PANEL			ALLOWABLE UNIFORM LIVE LOAD (psf)						
			Span						
Material	Gauge	Panel Width	24"	30"	36"	42"	48"	54"	60"
Steel grade D ASTM A653 (A446)	22	12"	473	305	213	157	120	94	76
	22	16"	355	229	160	117	90	71	57
	22	18"	316	204	142	104	80	63	51
Steel grade D ASTM A653 (A446)	24	12"	373	240	168	123	94	74	60
	24	16"	279	180	126	92	70	56	45
	24	18"	248	160	111	82	63	49	40
Aluminum Alloy	0.04	12"	115	73	51	37	28	22	18
3004 H34	0.04	16"	73	46	32	23	18	14	11
Aluminum Alloy	0.032	12"	90	58	40	29	22	17	14
3004 H34	0.032	16"	57	36	25	18	14	11	9

Table Provided for General Reference Only. Loads are based on engineered calculations of the panel only. Allowable uniform load values based on three-span condition. For system requirements or design assistance please contact your nearest Ultra Seam representative.